

# 3W Emergency LED Surface

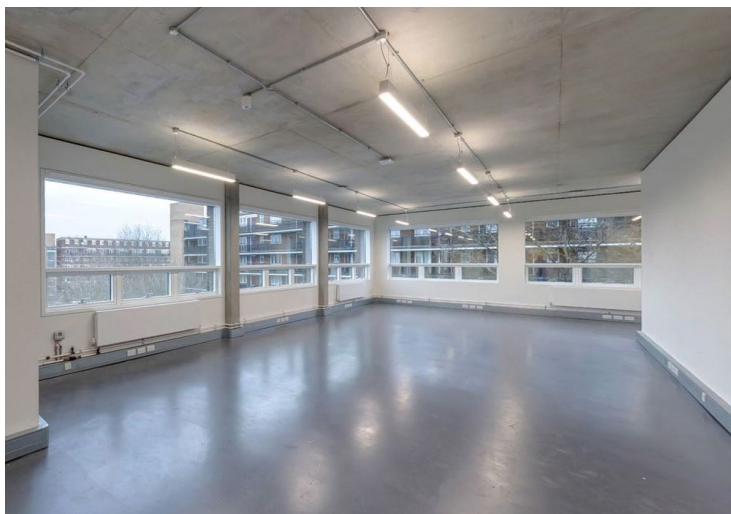


CE UK  
UKCA

LED

IP44

IK03

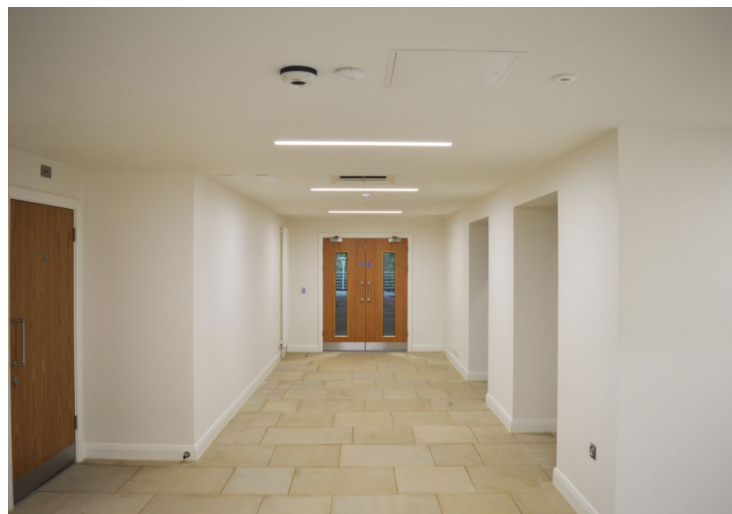


## Description

The 3W Emergency Surface fitting is a compact, low-profile emergency downlight, designed to blend seamlessly into most commercial environments. Providing effective emergency lighting, the 3W is available in both open area and escape route versions, ensuring versatile coverage for a range of safety requirements.

## Application

- Offices
- Corridors
- Schools
- Commercial Areas



## Body & Finish

Manufactured from thermally optimized die-cast aluminium, this fixture ensures excellent heat dissipation for enhanced performance and longevity. With an IP20 rating, it offers reliable protection against dust, making it ideal for indoor environments.

## Attachments

- Open Area Version
- Escape Route Version



# 3W Emergency LED Surface

## Order Codes

Wattage	Luminous Flux	LL/CW	Weight	Diameter	Depth	Maintained	Product Code
3.0	290	96.6	0.7kg	120 mm	67 mm	No	SGL/LED/3W/OA/S/NM3
3.0	290	96.6	0.7kg	120 mm	67 mm	Yes	SGL/LED/3W/OA/S/M3
3.0	290	96.6	0.7kg	120 mm	67 mm	No	SGL/LED/3W/ER/S/NM3
3.0	290	96.6	0.7kg	120 mm	67 mm	Yes	SGL/LED/3W/ER/S/M3

## Sizes

- Diameter: 120 mm
- Depth: 67 mm

## Code Options

- Add /ST to codes for Self Test
- Add /AD to codes for Addressable
- Add /110 to codes for 110 Degree Beam
- Add /60 to codes for 60 Degree Beam

## LED Boards

- Tridonic/OSRAM
- Colour Temperature: 6500k
- All LED data and performance data is taken at an ambient temperature of +25°C

## Control Gear

Tridonic/OSRAM

- Standard LED Emergency
- Self-Test LED Emergency
- Addressable EM-Pro LED Emergency
- WI-FI

## Main Attributes

- Open Area/Escape Route Distribution
- 60/120 Degree Beam Angle
- Non-Maintained & Maintained Versions
- Valve Regulated Lead Acid Battery
- 220-240V Input
- 50,000h L90 at 25°C
- IP44 Rated
- Healthy Charge LED
- EN60598:2:22 Compliant
- 7 Year Guarantee\*
- CE Marked

\* Please refer to the Warranty for more information.

## Photometrics

-